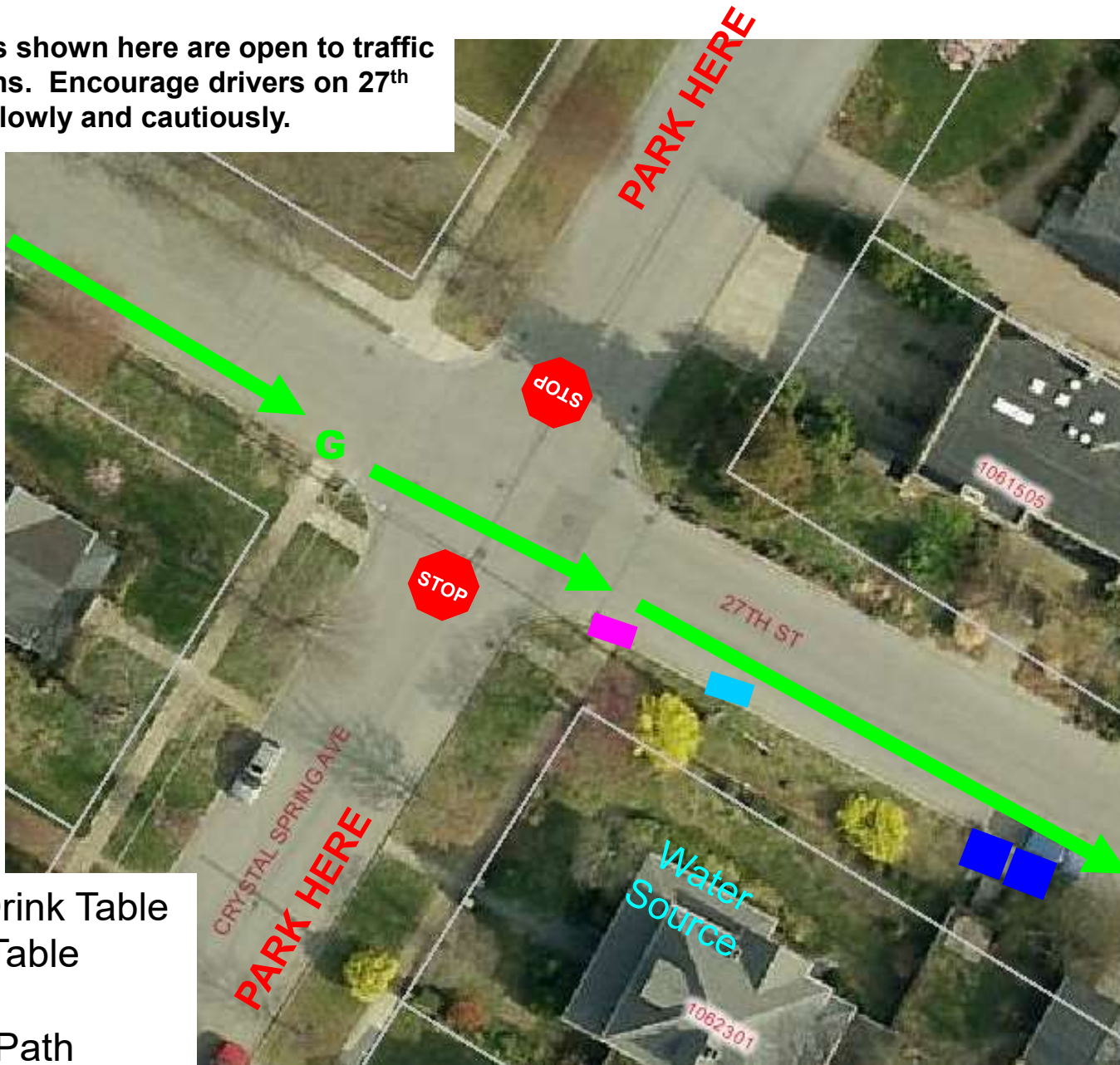








# Aid Station "27<sup>th</sup> St." – Crystal Spring & 27<sup>th</sup>

Traffic: All roads shown here are open to traffic in both directions. Encourage drivers on 27<sup>th</sup> Street to drive slowly and cautiously.



-  Energy Drink Table
-  WATER Table
-  Gu
-  Runners' Path
-  Port-a-Jon
-  Course Marshal

Water Source— At the Blecksmith's House—spigot on side or in front yard. Make sure water is off when you leave.  
Port-a-Jons— put on concrete pad at curb cut in front of trailer/fence gate. Do not block garage.